



Sustainable Home Product guidelines

Reference guide 2020



We are committed to doing everything we can to make a positive impact for society so that all our homes – including our communities, our forests and planet – can flourish.

We will make it affordable for millions of customers to have homes that are well insulated, energy efficient and affordable to run, free from harmful chemicals, made from sustainable, long-lasting materials and have beautiful, natural gardens that also welcome birds and wildlife.

Contents

2 Overview

3 Sustainable by design

4 Levels of sustainability

5 Six principles: what is sustainable?

8 Scrutiny, reporting and review

8 Science Based Targets Initiative

9 2020 Update summary

10 Criteria by principle

11 1. Connect to nature

13 2. Health & wellbeing

16 3. Live smarter

19 4. Save energy

22 5. Save water

24 6. Sustainable materials

26 Appendix

27 Plant list

Overview

We're transforming our ranges and embedding sustainability in our products, using our industry leading Sustainable Home Product Guidelines. Centred on the customer, these Guidelines aim to help make greener, healthier homes affordable by defining what is meant by 'sustainable'. Teams across the Kingfisher group are working hard to bring products that meet the Guidelines to our customers through all of our banners.

We help make homes that are well-insulated, energy efficient and affordable to run. Homes that use water efficiently. Homes free from harmful chemicals. Homes that use sustainable materials and beautiful, natural gardens that also welcome birds and wildlife. Homes that use fewer and more planet-friendly materials, and are fitted out with quality, long-lasting products made in ways that are better for people and the planet.

We know from our customer research that people aspire to have a sustainable home, but they often find it complicated or expensive to achieve. We want to change this.

Kingfisher sells thousands of different products. Every product is examined to assess whether it is sustainable – and that's what these Guidelines are designed to help with. From setting a maximum flow rate for a tap to specifying which plants are best for wildlife, every criteria is discussed with experts from the sustainability charity Bioregional before it is included in the Guidelines.

Over 37% of group sales in 2019/20 came from products that met Kingfisher's Sustainable Home Product Guidelines.



Customers

We help make greener, healthier homes affordable

Sustainable by design

Sustainability is one of our five core design principles used in the development of our ranges, alongside price, quality, form and function.

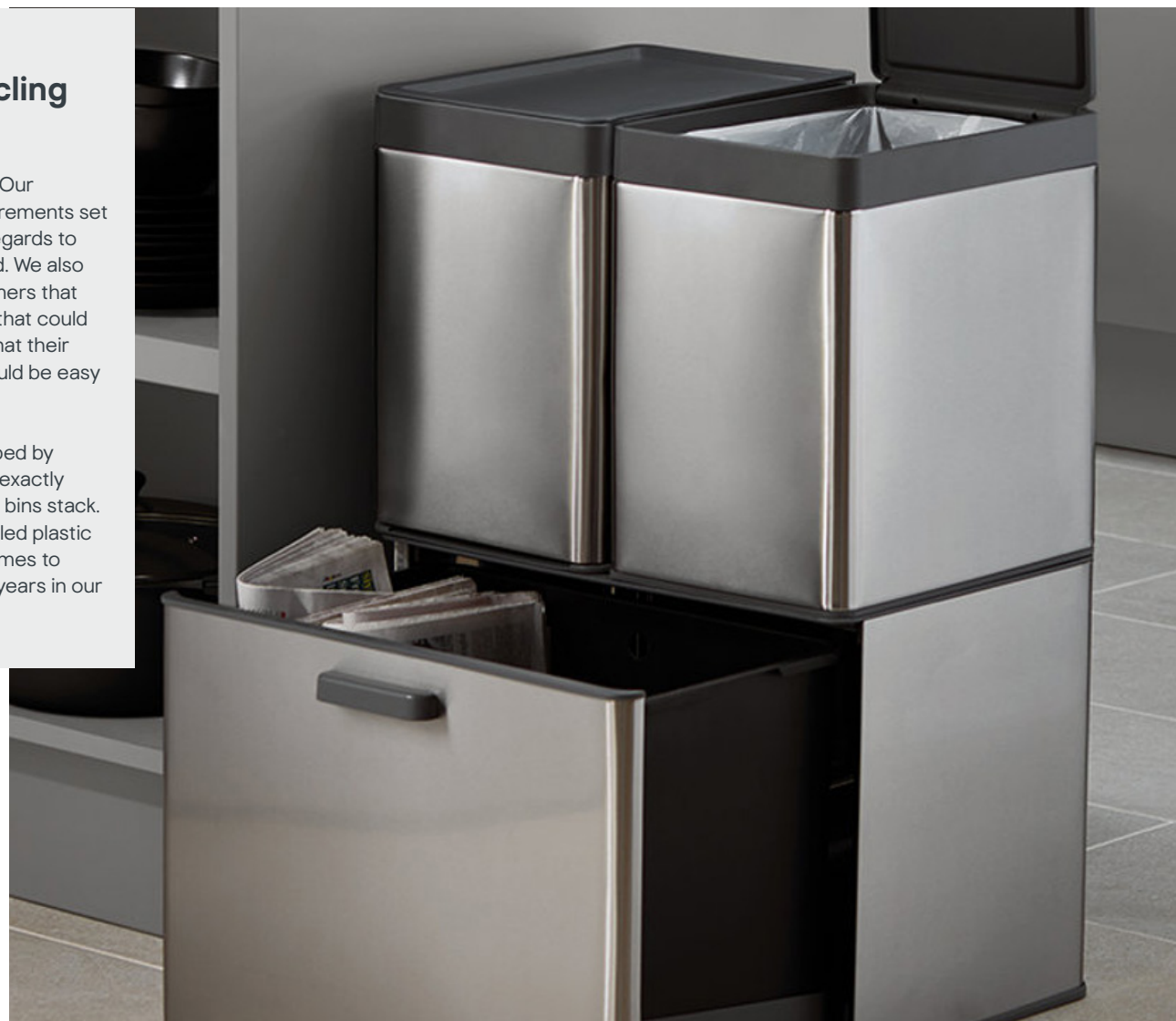
We don't think customers should have to search out a sustainable product. We're embedding sustainability into our product development process so that in future, customers will be able to choose any product they want and be confident it is as sustainable as possible.

When we improve a product's sustainability, we do not compromise on any of the five core design principles. Performance, design, quality and price remain key.

Case study: **Kora, making recycling easier to live with**

Recycling can be complicated. Our customers have different requirements set by their local authorities with regards to what can or cannot be recycled. We also found through talking to customers that they wanted recycling storage that could be customised to be exactly what their household needed and that would be easy to fit neatly into their kitchen.

Kora was designed and developed by Kingfisher. Customers can buy exactly the modules they need and the bins stack. The units are made using recycled plastic and have been tested 80,000 times to check that they can last for 10 years in our customers' kitchens.



Levels of sustainability

As well as describing what is sustainable, the Guidelines assign levels of sustainability:

‘Excite’ describes our most sustainable products with innovative features that have the potential to achieve significant change.

‘Exceed’ products can make a significant difference to the sustainability of our customers’ homes and/or the wider environment.

‘Expect’ products have a sustainable feature or benefit. This is the lowest level a product needs to reach to be considered sustainable.



Many products meet more than one criteria at Expect, Exceed or Excite. The product’s overall sustainability level is determined by the highest of the criteria it meets:

- A compost bin made from responsibly sourced wood might be **‘Expect’** for its materials, but **‘Exceed’** because it is helping customers to compost waste. It would be listed as **‘Exceed’**.

The Guidelines also have a **‘Watch list’** describing features of products that cannot be considered to be sustainable. If a product is on the **‘Watch list’** for any principle, it cannot be considered to be sustainable.

To be considered sustainable, a product must meet at least one criteria at Expect or higher and not meet any ‘Watch list’ criteria.

And of course, we expect all products we sell to meet all Kingfisher’s policies and all legal requirements.

Bioregional’s sustainability experts work with us to check every product that meets the Guidelines. The reporting process is subject to the same audit process as all measures in Kingfisher’s Responsible Business reporting.

The Guidelines are reviewed every year because of innovations in technology and because understanding of environmental impacts continues to improve.

Case study: Lightbulbs

Prior to the 1990s, most of the lighting in our homes came from incandescent lightbulbs. Compact fluorescent (CFL) and halogen light bulbs then became available that were more energy efficient, so in the earliest versions of these Guidelines in 2008, both of these lighting types were listed at the equivalent to **‘Exceed’**.

Since then, technology has improved and LED lighting has superseded both CFL and halogens, using less energy, reaching full brightness straight way and lasting a long time. As the price of LED has come down, we moved CFL and halogen first to **‘Expect’** and then to the **‘Watch list’**.



Six principles: what is sustainable?



Connect to nature

Helping wildlife in our gardens and beyond; interacting with natural world; eating produce that we've grown ourselves.



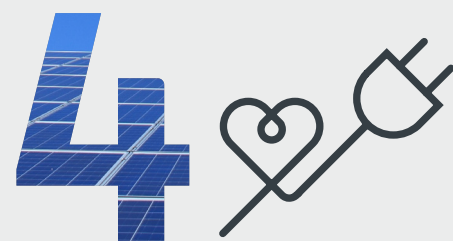
Health & wellbeing

Making our homes safer and healthier; enjoying our homes whatever our age; being active; addressing toxins; adapting to climate change.



Live smarter

Reduce, reuse, recycle; smarter uses of resources; better product quality; tackling waste; pay-to-use propositions.



Save energy

Keeping household energy bills down; addressing carbon emissions; using renewable energy.



Save water

Stopping water from being wasted; using rainwater, preserving premium drinking water.



Sustainable materials

Responsible sourcing; choosing materials with a positive impact; tackling materials that have a damaging impact.

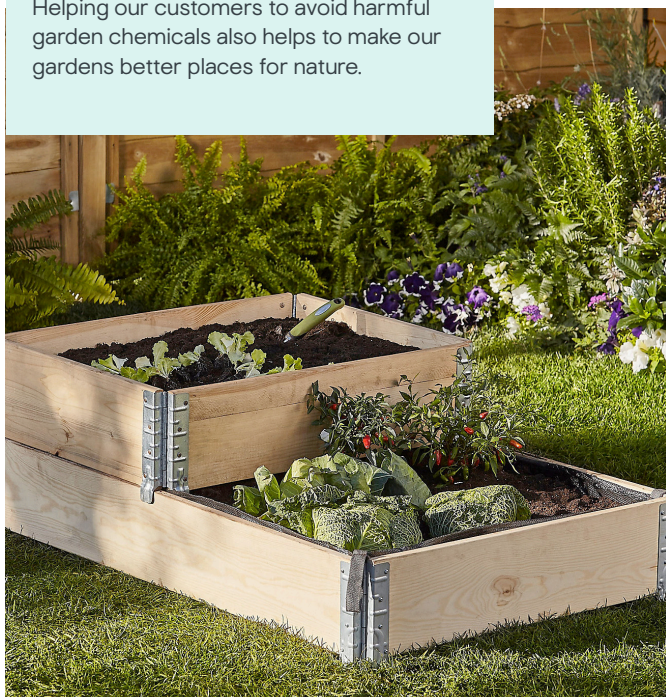


Case study 1: Connect to nature Growing produce

Enabling customers to grow some of their own food has many benefits to physical and mental health. Selling garden tools, seeds and plants together with advice on how to get started helps our customers to connect more with the natural world.

Many varieties of herb, fruit and vegetable also help wildlife directly in our gardens. Runner beans, apple blossom and herbs like rosemary are all attractive to bees.

Helping our customers to avoid harmful garden chemicals also helps to make our gardens better places for nature.



Case study 2: Health & wellbeing Air purifying paint

Moving from solvent-based to water-based paints helps to reduce airborne pollutants from painting projects, specifically volatile organic compounds (VOCs). It also means that our customers can stop buying harmful solvents like white spirit to clean brushes.

Air purifying paint goes one step further, actually reducing formaldehyde in the air.



Case study 3: Live smarter Recycled underlay

Incorporating more recycled material into our products helps to close the loop on waste. This carpet underlay is made from waste textiles, clothing placed into recycling that is too poor quality to be re-worn.





Case study 4: Save energy

Addressing thermal efficiency is essential for saving energy at home. Measures include efficient windows, like this timber double glazed unit, insulation and efficient doors.

Most all measures are large scale though. Fitting a draught excluding letter box, closing curtains on cold evenings or fitting thermal foil behind heaters on external walls can all make a difference to comfort as well as to energy bills.



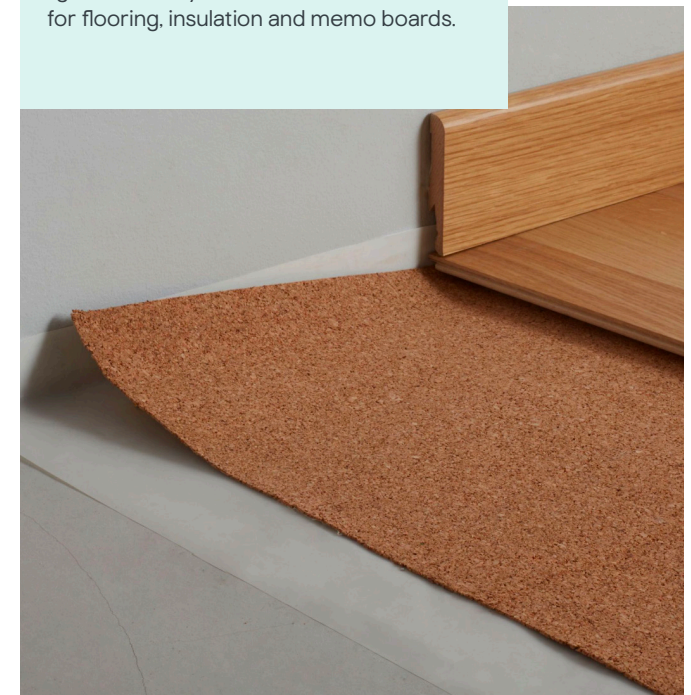
Case study 5: Save water Taps

Most of our basin and kitchen taps now have an aerating regulator fitted making them more water efficient. Regulators work smartly, only restricting the flow when it is detected to be high. Aeration mixes water with air, providing a good pressure ideal for cleaning toothbrushes or rinsing glasses. When we use less hot water in our homes, we are also saving energy.



Case study 6: Sustainable materials Cork

Cork is harvested from cork oak trees from forests around the Mediterranean that support a wealth of wildlife. Cork is stripped, but the tree grows the bark layer back. It's a traditional and skilled operation. But as more wine bottles have screw caps, demand for cork has fallen, putting the cork oak forests at risk. Finding more uses for cork can help to keep demand up and protect these forests. Naturally insulating, light and decay resistant, cork can be used for flooring, insulation and memo boards.



Scrutiny, reporting and review

Reporting on the Sustainable Home Product Guidelines takes place through the year internally and externally annually as part of Kingfisher's Sustainability Reporting.

Products that meet the Guidelines are assessed and sales measured using sales value. This reflects materiality to the business and to our customers. The percentage of group sales that come from products that qualify for the Sustainable Home Product Guidelines is a key metric on Kingfisher's Responsible Business Plan.

Reporting is subject to external audit annually.

Sustainability experts from Bioregional act as Kingfisher's external check on the Guidelines and on reporting, prior to external audit. Bioregional is a charity and social enterprise that aims to develop more sustainable ways of living. Their projects have included the 2012 London Olympic Games, North West Bicester which is the UK's first eco-town and Les Villages Nature Paris. Because Bioregional has a combination of global construction, business and community experience, the charity is an expert partner for the Sustainable Home Product Guidelines. Every criteria in the Guidelines is explored with Bioregional.

Science Based Targets Initiative

Kingfisher has an ambitious Science Based Target, will help us cut greenhouse gas (GHG) emissions from our business, products and supply chains by 2025.

As well as addressing the business's operational impacts (for example, energy efficiency of our stores), the Science Based Target Initiative is challenging us to look at Scope 3 emissions. Scope 3 includes the environmental impact of making the products we sell and of what our customers do with products after purchase. Upstream Scope 3 emissions can include the impact of mining raw materials, energy used in factories and carbon emissions from shipping. Downstream, Scope 3 emissions can include the impact of our customers driving home with products, energy used by the product and the impact of what happens to the product when the customer has finished with it.

It has been calculated that these indirect Scope 3 emissions account for over 90% of Kingfisher's total carbon impact.

Many of the criteria in the Sustainable Home Product Guidelines link to meeting our Science Based Target. For example, using recycled material to make products tends to use much less energy than extracting virgin raw materials as well as helping to enable more recycling to take place. Choosing wood that has been responsibly sourced means that the product is not contributing to deforestation. In China, Kingfisher has been working with World Wildlife Fund Honk Kong on a programme that encourages our vendors to make factories more energy efficient.

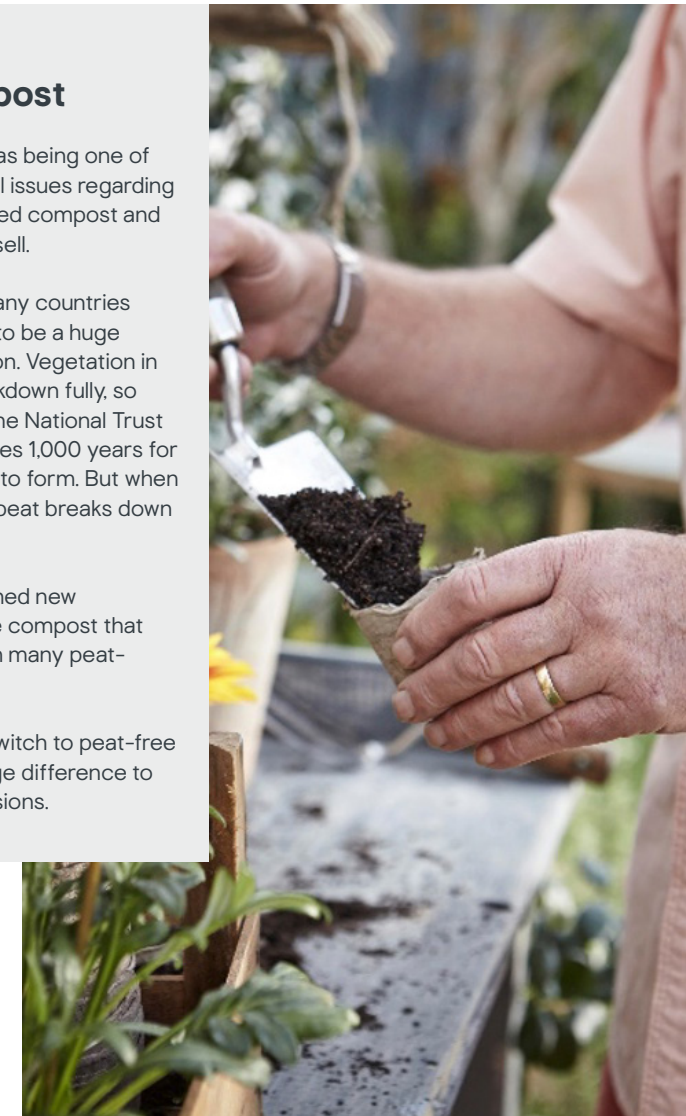
Case study: Peat free compost

Peat has been identified as being one of Kingfisher's most material issues regarding carbon. It is used in bagged compost and in growing the plants we sell.

Peatbogs are found in many countries and are now considered to be a huge store of the world's carbon. Vegetation in a peatbog does not breakdown fully, so its carbon is locked up. The National Trust have estimated that it takes 1,000 years for one metre depth of peat to form. But when used in our gardens, the peat breaks down quickly, releasing carbon.

In 2020, Kingfisher launched new formulations of peat-free compost that perform even better than many peat-based composts.

Helping our customers switch to peat-free gardening will make a huge difference to Kingfisher's carbon emissions.



2020 Update summary

For the 2020 edition, the following changes have been made:

Barbecues:

- In previous editions, charcoal has been categorised as **Sustainable materials/ 'Expect'** if it meets the responsible sourcing requirements. Gas barbecues have been on the **'Watch list'** as they use cannister gas.
- Greater understanding of air quality and other health and environmental aspects of using barbecues has led to a review of outdoor cooking:
 - Single use barbecue products (including disposable barbecues) remain on the **'Watch list'** in **Live smarter**.
 - Refillable gas cannisters have been removed from the **'Watch list'**. If the gas is not derived from fossil fuels, cannisters may meet criteria in **Save energy**.
 - Single-use gas cannisters remain on the **'Watch list'** but have been moved to **Live smarter** as a waste issue. Products that require a single-use gas cannister to work are also on this **'Watch list'**.
 - Charcoal propellant is no longer considered to be a **Sustainable material** and moves to the **'Watch list'** in **Health & wellbeing**. However, charcoal must meet Kingfisher's Wood and Paper Policy if sold by a Kingfisher banner.
 - Products that burn charcoal are now on the **'Watch list'** for **Health & wellbeing**. Firepits and chimineas have also been added to this **'Watch list'**.

- Gas barbecues are included as **Health & wellbeing** at **'Expect'** because the associated health issues are lower than for charcoal barbecues. However, if they can only be used with a single use gas cannister, they are on the **'Watch list'**.
- Electric barbecues are included as **Health & wellbeing** at **'Expect'**, because the associated health issues are lower than for gas or charcoal barbecues.

Carbon filters for cooker hoods:

- **New: Health & wellbeing/ 'Expect'**
- Cooker Hood filters need to be replaced regularly to maintain their performance in managing the air quality impact of cooking.

Gas hobs and gas fires

- **Deleted: Save energy/ 'Expect'**
- Although cooking on a gas hob is less carbon intensive than some electric hobs, increasing concerns about indoor air quality mean that this criterion has been deleted.
- Likewise, the criteria for gas fires has also been deleted.

Cooling: comfort fans

- **New: Save energy/ 'Expect'**:
 - Comfort fans where the Service Value is greater than or equal to 1.0 m³/min/W.
- **New: Save energy/ 'Exceed'**:
 - Comfort fans where the Service Value is greater than or equal to 1.5 m³/min/W.

- Cordless and USB powered fans.
- All ceiling fans remain **Save energy/ 'Exceed'**.
- As customers adapt to climate change, keeping homes comfortable during extreme hot weather becomes more important. Fans use less electricity than air conditioning.

Aluminium

- **New: Sustainable materials/ 'Expect'**
 - Aluminium comes from an Aluminium Stewardship Initiative (ASI) certified smelter which requires Greenhouse Gas (GHG) emission intensity, tonnes CO₂ per tonne of aluminium to be ≤8 tCO₂e/t Al for new operations from 2020 and existing operations by 2030.
- **New: Sustainable materials/ 'Exceed'**
 - Aluminium comes from an Aluminium Stewardship Initiative (ASI) certified smelter and:
 - Greenhouse Gas (GHG) emission intensity, tonnes CO₂ per tonne of aluminium GHG intensity of final cast aluminium ≤4.5 tCO₂e/t Al.
- As aluminium is a carbon intensive material, requiring large amounts of energy to produce, addressing greenhouse gas emissions for producing the aluminium in products is important to address embodied carbon.

Boilers and space heaters

- **Change: Save energy/ 'Expect'**
 - Following improvements in boiler energy efficiency, A rated boilers are now **'Expect'**

(previously **'Exceed'**) and B rated boilers no longer qualify for the criteria.

Insulation accessories:

- **New: Save energy/ 'Exceed'**/Thermal Efficiency
 - Loft stilts and other products that enable spaces to be insulated where other considerations (e.g. storage) would otherwise be a barrier.
 - Membranes that prolong the life of insulation.
 - Cavity closers.
 - Wall ties that retain cavity wall insulation.

Biobased materials

- **New: Sustainable materials/ 'Exceed'**
 - DIN Geprüft Biobased, OK biobased, USDA Certified Biobased, Roundtable on Sustainable Biomaterials (RSB)
 - Biobased material schemes.
- Biobased materials are considered to be moving materials in a positive direction, in line with the European Union's ambition to develop a bio-based economy.

Criteria by principle

- 11 **1. Connect to nature**
- 13 **2. Health & wellbeing**
- 16 **3. Live smarter**
- 19 **4. Save energy**
- 22 **5. Save water**
- 24 **6. Sustainable materials**





1. Connect to nature

Watch list

- Chemicals that harm wildlife whether sold as a chemical or present in another product:
 - Includes metaldehyde.
 - Included 2-4 D.
 - Includes neonicotinoids:
 - Clothianidin, Imidacloprid, Thiamethoxam, Acetamiprid, Dinotefuran, Nithiazine, Thiocloprid, Nitenpyram, Sulfoxaflor.
- Non-native invasive plants, seeds and bulbs:
 - Examples include water hyacinth, some species of rhododendron. See Plant List (page 27) for more details.

The RHS estimate that 5 million gardens in the UK now have no plants at all. Plants can help to mitigate climate change as they help to keep urban temperatures down and reduce the risk of surface water flooding. They can filter some pollutants. They provide wildlife habitats. There is also evidence of a link between plants and wellbeing.

- Products that contain peat:
 - Growing media (bagged or bulk) containing any peat.
 - Peat as part of growing media sold with plants unless there is a plan in place to phase out the peat by January 2022.

Expect

- All plants, including seeds, bulbs, plants, shrubs and trees. Includes pot grown Christmas trees, turf, lawn seed and houseplants (corresponding **'Exceed'**):
 - Many plants will meet the **'Exceed'** level. See the Plant List for more details.
 - Please note that any growing media included should be peat free or have a plan in place to replace the peat component by January 2022.
- Outdoor light fittings designed to reduce light pollution and light nuisance:
 - For example, where the light can be directed downwards or is shielded above.
 - Please note that timers and sensors are detailed in the **Save energy** principle.
 - LED lights will also be covered by the **Save energy** function.
- Products re-engineered to support nature (corresponding **'Exceed'**):
 - Gabion baskets – provide shelter for wildlife, alternative to walling.

- Green wall products
 - Containers designed to make plant care easier (e.g. with a reservoir)
 - Containers designed to facilitate vertical gardening. Includes containers designed to fit on balcony rails.

Exceed

- Living roof products: kits and components.
- Alternatives to conventional garden chemicals including:
 - Farmyard manure, chicken manure pellets
 - Green manure seeds
 - Landscape fabrics for weed control
 - Metaldehyde free slug control
 - Biological controls
 - Chemicals approved for use in organic gardening
 - Fine netting as an alternative to pesticides.
- Native wildflowers, trees and plants. See [Plant List](#) for more details (corresponding **'Expect'**).
- Growing produce:
 - Seeds, growing kits, trees, plants, bulbs that enable produce to be grown (corresponding **'Expect'**)
 - Vegetables, including onion sets, garlic bulbs and seed potatoes
 - Culinary herbs
 - Fruit.
- Products that support growing produce by extending seasons or increasing the variety of edible plants that can be grown including:
 - Greenhouses, grow houses, cold frames
 - Fleece protection for plants
 - Unheated propagators.

- Products designed specifically for growing produce including:
 - Specialist containers and supports
 - Raised bed kits.

Kingfisher's Kitchen Garden is a modular proposition that helps customers with limited space to grow produce. It is based on a raised bed system and accessories including plant supports, fine mesh netting to keep pests at bay and covers to extend the season and aid with propagating seeds.

- Supporting nature:
 - Plants that support wildlife. See [Plant List](#) for more details (corresponding **'Expect'**).
 - Products that enable customers to connect to wildlife:
 - Bird care products
 - Nest boxes
 - Bug lodges
 - Pond liners and pond planting baskets.
 - Products adapted to support wildlife:
 - Fences adapted with hedgehog gaps
 - Bricks adapted for swifts.



2. Health & wellbeing



Watch list

- Products that put health or welfare at risk in-use, in-production or at end-of-life including:
 - Corrosive household and decorating chemicals, including drain cleaners based on strong acids.
 - Chemicals linked to health risks, including:
 - Glyphosate
 - Triclosan
 - Harmful solvents, including:
 - Diisopropyl ether
 - 1,4-dioxane
 - Dimethyl ether
 - Pentane
 - Hexane
 - Dimethylformamide
 - N,N-dimethylacetamide
 - 1-methyl-2-pyrrolidone
 - Methoxy ethanol
 - Triethanolamine
 - Diethyl ether
 - Benzene
 - Chloroform
 - Carbon tetrachloride
 - Dichloroethane
 - Nitromethane.
 - Very High Concern Phthalates. Please note that identifying products that contain these chemicals is ongoing. The **'Watch list'** should only be applied in this instance to new products that are being addressed by the Sustainable Chemicals team.
 - Di-iso-nonyl phthalate (DINP)
 - Di-n-octyl phthalate (DNOP)
 - Di(2-ethylhexyl)-phthalate (DEHP)
 - Diisodecyl phthalate (DIDP)
 - Butyl benzyl phthalate (BBP)
 - Dibutyl phthalate (DBP).
 - Very High Concern Halogenated Flame Retardants. Please note that identifying products that contain these chemicals is ongoing. The **'Watch list'** should only be applied in this instance to new products that are being addressed by the Sustainable Chemicals team.
 - 1,3-Dichloro-2-propanol phosphate (TDCPP)
 - Tris(2-chloroethyl) phosphate (TCEP)
 - Tris (1-chloro-2-propyl) phosphate (TCPP).
 - Paints and chemicals with/emitting high levels of volatile organic compounds:
 - 25% or greater VOC content (VOC globe system), or
 - C rated (VOC emissions system).
- Products linked to pollution, including:
 - Products that can contribute to air pollution including:
 - Petrol powered tools and generators
 - Smoky fuels.
 - Charcoal fuel and products that use charcoal as fuel.
 - Incinerators, fire pits and chimineas.
 - Products emitting high levels of volatile organic compounds.
 - Products contributing to plastic pollution, including plastic microbeads, plastic glitter where it may enter the environment (e.g. applied to single-use products, added to paint and glitter supplied as a product).
 - Products that contain CFCs or HFCs.

Expect

- Products that improve safety at home and whilst doing projects including:
 - Personal Protection Equipment (PPE) including goggles, safety shoes with toe protection, hi-vis clothing, nuisance masks, chainsaw trousers, respirators, safety gloves.
 - Anti-slip mats for bathrooms, anti-slip tape
 - Carbon monoxide alarms and detectors
 - Fire protection products including:
 - Smoke and heat detectors
 - Fire extinguishers, fire blankets
 - Escape ladders.
 - First aid kits
 - Child safety products, including stair gates.
- Water based paints, wood treatments, primers, varnishes, household and decorating chemicals.

Water based paint emits lower levels of volatile organic compounds than solvent based paint. To clean brushes, there is no need to use toxic solvents like white spirit.

- Acoustic insulation.
- Water filters, water filter systems.
- Products that help to improve outdoor air quality including:
 - Cycling products, storage and security
 - Electric car charging products.

- Products that enable safer outdoor cooking (corresponding 'Exceed'):
 - Gas barbecues that use a refillable gas canister.
- Products re-engineered to be free from high concern orthophthalates and halogenated flame retardants (corresponding 'Exceed').
- Products that can help to improve indoor air quality (corresponding 'Exceed') including:
 - Ventilation products (must be fitted with occupancy sensor, motion sensor, timer, humidistat or pollution detector).
 - Please note that if the unit is over 30 watts, it should be B rated or better for energy efficiency.
 - Pollution sensors.
 - Carbon filters for cooker hoods.
 - Energy efficient dehumidifiers:
 - that have an operating capacity of 35 litres or less per day or less and where energy efficiency (litres per kilowatt hour) is 2 or more, fitted with a humidistat.
 - that have an operating capacity of 35 to 87 litres per day or less and where energy efficiency (litres per kilowatt hour) is 2.8 or more, fitted with a humidistat.

When rain water cannot flow down to the water table, surface water flooding can occur. Choosing porous surfaces, including grass and gravel, helps to manage surface water.

- Products that can help to reduce the risk of surface water flooding by keeping surfaces porous, including:
 - Decorative aggregates
 - Please note that ballast and gravels where the primary use is expected to be added to concrete are not included.
 - Semi porous resin bonded gravel
 - Gravel stabilising grids
 - Channel drainage products.
- Textile product re-engineered to be free from all fluorocarbon water repellents.

Exceed

- Supporting active lifestyles and enabling customers to live independently for longer, including:
 - Products designed to help customers with limited mobility, including:
 - Grab rails, shower seats and other products that enable safe and independent use of bathrooms.
 - Products that can be adapted to meet different needs of residents of a household.
 - Gadgets that help to make daily life easier, for example, tools that enable picking up items without the need to bend.
 - Play equipment that encourages physical activity outdoors, excluding water intensive products (e.g. paddling pools). Includes:
 - Trampolines, climbing frames, swings
 - Sand pits
 - Children's sport equipment and toys.

The Daily Mile initiative, started in a Scottish school and adopted by over 3,600 schools globally, aims to get schoolchildren to run or walk a mile a day and has been found to improve children's health significantly. Teachers also report better concentration levels in the classroom.

- Alternatives to harmful household and decorating chemicals, including:
 - Microfibre cloths that work well without chemical cleaners
 - Non-toxic household and decorating chemicals
 - Alternatives to corrosive drain cleaning chemicals: including sink/basin/shower strainers, sink plungers.

Strong acids found in some chemical drain cleaning products are of increasing concern as some have been linked to acid attacks. Kingfisher has been removing these products from sale. Preventing drains from becoming blocked and promoting mechanical methods of keeping drains clear are safer alternatives.

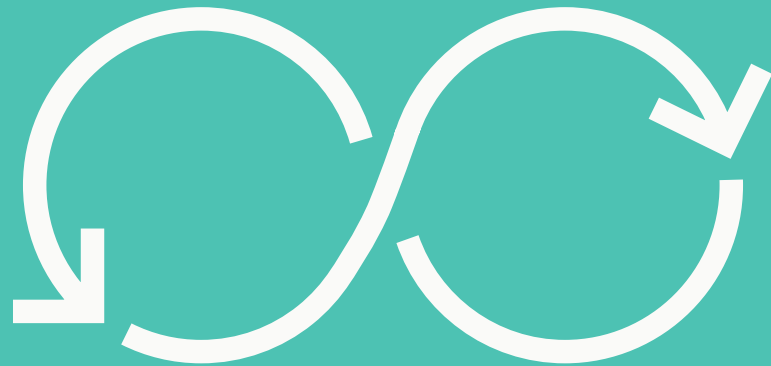
- Improving air quality:
 - Products certified to CARB2 or European E0 level for formaldehyde emissions.
 - Products that are rated 'Minimal' or A+ for VOCs for applications where customers would otherwise be exposed to emissions including:
 - Paint, varnishes, primers, wood treatments
 - Adhesives, tile adhesives
 - Carpets, carpet tiles
 - Flooring underlays
 - Vinyl flooring, vinyl flooring tiles
 - Solid flooring including laminate, engineered wood, solid wood
 - Furniture including kitchen units and bathroom units.
- Products that enable safer outdoor cooking (corresponding '**Expect**'):
 - Electric barbecues.
- Products re-engineered to be free from all orthophthalates and organophosphate flame retardants (corresponding '**Expect**').
- Protection from flooding, including:
 - Cold water tank jackets
 - Flood prevention products
 - Flood alarms
 - Flood pumps
 - Outdoor tap covers
 - Gutter leaf guards
 - Drain rods.

Preventing mains water from causing flooding helps to conserve water. Keeping drains clear of leaves and debris helps to prevent flooding.

Excite

- Products containing innovative green chemistries.





3. Live smarter

Watch list

- Single use, disposable products where there is a viable reusable alternative. These include:
 - Disposable batteries, products supplied with short-life disposable batteries (except smoke and carbon monoxide alarms)
 - Disposable wipes
 - Single use carrier bags
 - Disposable liners for paint roller trays
 - Thin polythene dustsheets designed for single use (thicker dustsheets designed for multiple use are not on the Watch list)
 - Single use barbecues
 - Disposable, single-use dehumidifiers.

Many single use products do not represent a good use of resources and some are associated with waste problems. For example, batteries contain materials that can contaminate soil and water sources. Batteries can be recycled, enabling the chemicals and metals to be kept in use. Switching from disposable to rechargeable batteries is a way we can help to reduce the amount of battery waste.

Expect

- Training books and other materials that enable customers to gain skills.
- Products designed for longevity, including:
 - Products guaranteed for 10 years or longer.
 - Products designed with features that can improve longevity including:
 - Modular products, including power tools with a shared battery (if available to purchase without the battery and where the battery is available as a spare part).
 - Sanding sponges as reusable alternatives to sand paper.
 - Products that protect and ensure efficient functioning of other SHP products e.g. insulation; protective membranes and loft stilts.
- Enabling repair, to improve product longevity:
 - Spare parts:
 - A spare part is an interchangeable component that is functionally identical to and interchangeable with the item it is intended to replace. Spare parts are not consumables.
 - Includes replacement toilet seat hinges, tap washers, plugs for basins, replacement siphon units for toilets, spark plugs.

Spare parts enable products to be repaired, extending product life. Making spare parts readily available is a key goal of the Circular Economy.

- Excludes consumables. Consumables are intended to be used up and then replaced.
 - Chain saw chains, drill bits, jigsaw blades, strimmer line, light bulbs and mower blades are all examples of consumables.
- Features that reduce the need for product maintenance.
- Repair kits, and repair products:
 - Includes hose pipe repair fittings.
 - Tools designed specifically to repair e.g. tap reseating tool.
 - Includes adhesives that are primarily for repair, but please note that these must not contain harmful solvents (see **'Watch list'** for **Health & wellbeing**).
- Products and services that make recycling easier, including:
 - Split bins, waste management systems
 - Recycling storage bags
 - Multiple bin storage
 - Food waste bins
 - Compostable liners for food waste bins
 - Recycling services, including skip hire and household collection.
 - Please note that checks should be made to ensure that responsible recycling is maximised.

- Recycling and reusing materials in products (corresponding **'Exceed'**):
 - Composite hybrid material, comprising recycled plastic and recycled wood. This is long lasting compared to wood, even when exposed to water and light, and requires no additional treatment. However, it is impossible to separate the materials at end-of-life and although it can be recycled into another composite product, currently, there are no widely available recycling facilities for customers.
 - Please note that to meet chemical regulations and standards, the source of the plastic waste should be known and checked to ensure that the plastic is safe for customers to use.
 - Materials should be 100% recycled post-consumer waste.
 - Wood should be compliant with the Kingfisher Wood and Paper Policy.
 - Composite materials should only be used where its durability is a key benefit.
 - For example, using as decking where its water resistance means that it is an alternative to timber decking that will require regular treatment.
- Plastics:
 - 50% or more post-consumer waste.
 - Please note that to meet chemical regulations and standards, the source of the plastic waste should be known and checked to ensure that the plastic is safe for customers to use.
 - 90% plastic post-consumer waste where the lifetime of the product is expected to be limited. Examples include bin liners and rubble sacks (unless designed for multiple use).

- Please note that to meet chemical regulations and standards, the source of the plastic waste should be known and checked to ensure that the plastic is safe for customers to use.

Moving away from single use plastic products is an ambition. But some single use products are unavoidable at present for our customers. For example, many local authorities require bin bags to be used as part of waste collection.

- Paper:
 - 100% paper post-consumer waste where the lifetime of the product is expected to be limited. Examples include paper towels. Please note that there must also be compliance to all Kingfisher policies.
- Tiles made in country of sale using some pre-consumer recycled ceramic materials compared to imported tiles made from virgin clay.





Exceed

- Established propositions from Kingfisher's Circular Value Chain Ambition. Products from the 20 products or services that help customers to live smarter – relating to the new KF target: Products and propositions that score Bronze or above in Kingfisher's circular value chains assessment. Circular value chains are assessed and verified by Bioregional upon request.

In 2014, Kingfisher launched the easyGrow bedding plant proposition which replaced peat with coir and expanded polystyrene trays with recycled PET. Every stage of the product's life cycle was examined and improved, leading to easyGrow being recognised as Kingfisher's first Circular Value Chain.

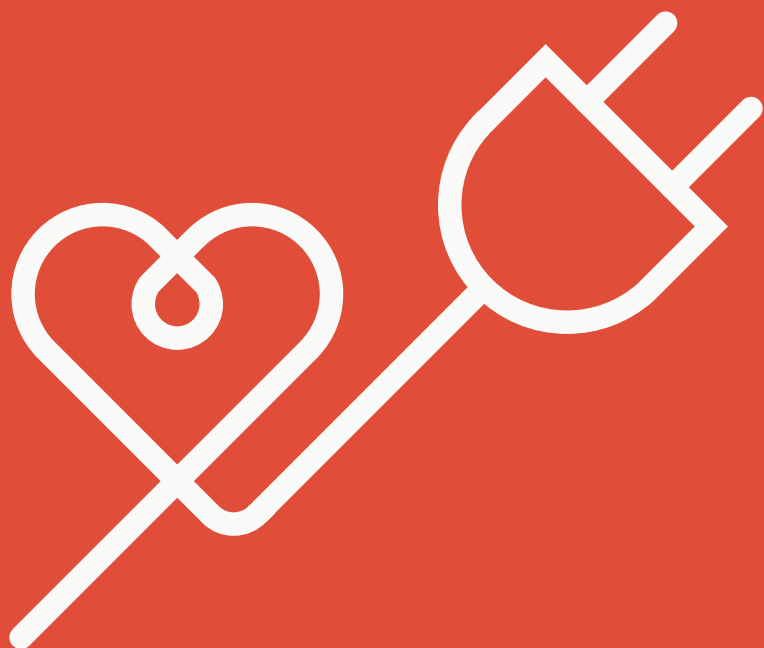
- Hire and rental – where customers can pay-to-use instead of paying to own. Includes:
 - Van hire, enabling customers without access to a car to shop.
 - Tool hire where the proposition is primarily aimed at Trade customers.
 - Timber cutting services
 - Glass cutting services.
- Composting aids, including:
 - Compost bins, composters
 - Hessian leaf mould sacks.

- Reusable alternatives to single-use products including:
 - Rechargeable batteries and chargers.
 - Please note that power tool batteries are treated as spare parts.
 - Reusable grow bags
 - Heavy duty garden clearaway sacks and tear-resistant rubble bags.
- Products made from specified recycled or reused materials (corresponding '**Expect**'). The levels and requirements are specified by material:
 - Paper and card: 100% post-consumer waste.
 - Note that single-use paper products are in the '**Expect**' criteria.
 - Wood:
 - Reused waste wood, e.g. offcuts from timber cutting services.
 - 100% post-consumer waste.
 - No added formaldehyde.
 - Plastics:
 - 90% or more post-consumer waste.
 - Please note that to meet chemical regulations and standards, the source of the plastic waste should be known and checked to ensure that the plastic is safe for customers to use.
 - Bin liners and other products that are designed for single-use or short-term use are in the '**Expect**' criteria.
 - Textiles:
 - 90% or more post-consumer waste.
 - Cotton: 20% or more post-consumer waste.
 - Glass:
 - Clear glass: 100% post-consumer waste.
 - Glass wool: 80% post-consumer waste.

Excite

- Innovative propositions from the 20 products or services that help customers to live smarter – relating to the new KF target: Products and propositions that score Bronze or above in Kingfisher's circular value chains assessment. Circular value chains are assessed and verified by Bioregional upon request.
- Alternative business models that offer innovative pay-to-use services to customers:
 - Repair services.
 - Tool hire where the proposition is designed to widen take-up of tool hire.
 - Craft and repair events and classes, passing skills onto customers using the store's equipment and tools.

- Aggregate:
 - Minimum 75% recycled content.
- Plasterboard:
 - 90% post-consumer waste.



4. Save energy

Watch list

- Carbon intensive products. Please note that if a product considered to be 'energy intensive' is re-engineered to be more energy efficient, it may be considered to be sustainable, but this should be assessed on a case-by-case basis. Carbon intensive products currently include:
 - Patio heaters, external use air coolers.
 - Using fuels to warm or cool outside space.
 - Wired underfloor heating.
 - Electrical propagators using mains electricity.
 - Greenhouse heaters.
- Inefficient energy using products. Please note that if a product considered to be 'inefficient' is re-engineered to be more energy efficient, it may be considered to be sustainable, but this will be assessed on a case-by-case basis. Inefficient energy using products currently include:
 - Halogen lighting including light bulbs, lights supplied with halogen light bulbs.
 - Incandescent lighting, lights supplied with incandescent light bulbs.
 - CFL lighting including light bulbs, lights supplied with CFL light bulbs.
 - Fluorescent lighting and light tubes.
 - Boilers and space heaters that are C rated or lower.
 - Gas fires that are C rated or lower.
 - Electric hobs, except induction.

- Fossil fuels:
 - Coal and products that contain coal.
 - Paraffin, paraffin heaters.
 - Petrol and petrol-powered products.

Expect

- Efficient, good quality energy using products (corresponding '**Exceed**'), including:
 - LED lighting, including string lights and battery powered LED torches, lights and lanterns.
 - Kitchen appliances:
 - Please note that these criteria will change in 2019 when the EU Energy Label will be updated for a number of appliance types.
 - Cookers:
 - A rated for current energy label.
 - For double ovens, the rating for the larger, main oven is the pertinent rating.
 - For cookers that include a hob, the hob should be induction or gas in order to meet the '**Expect**' requirement.
 - Cooker hoods:
 - A rated for current energy label.
 - Tumble dryers:
 - A+ rated for current energy label.
 - Fridges, freezers and fridge freezers, wine coolers:
 - A++ rated for current energy label.
 - Washing machines:
 - A++ rated for current energy label.
 - Washer dryers:
 - A rated for current energy label.

- Dishwashers:
 - A++ rated for current energy label.
 - Water heaters:
 - B rated for energy label.
 - Boilers and space heaters:
 - A rated for energy label.
 - Electric fires:
 - A rated for energy label.
 - Air cooling:
 - Air conditioning units:
 - Single and double duct systems that achieve A++ energy rating.
 - If the unit has a heating function, the rating for heating must be at least A+.
 - Other systems that achieve A+ energy rating.
 - Comfort fans where the Service Value is greater than or equal to 1.0 m³/min/W.
 - Power tools that employ brushless technology.
- Thermal efficiency
- Doors and windows meeting **'Expect'** thermal requirements (corresponding **'Exceed'**):
 - Windows, roof windows, glazed doors, patio doors:
 - Where the frame is uPVC:
 - U_w < 1.3 W/m²K.
 - Where the frame is timber or metal:
 - U_w < 1.6 W/m²K.
 - Doors (unglazed): U_w < 1.5 W/m²K.

Because it needs little maintenance, uPVC is often used for doors and windows. The different u-value requirements in these guidelines reflect the environmental issues with uPVC in its manufacture and at end of life.

- Products that help to keep homes cooler:
 - Shutters and awnings
 - Thermal blinds
 - Glazing film, including UV filtering products.
- Draught protection (corresponding **'Exceed'**):
 - Keyhole covers.
- Product that make use of renewable energy for decorative purposes:
 - Solar powered devices, including decorative lighting.
- Products that improve heating efficiency (corresponding **'Exceed'**):
 - Central heating chemicals
 - Efficient electrical heater:
 - fitted with an integrated thermostatic control based on either radiant panel or inertia technology.
 - Bathroom electric heating systems fitted with a programmable timer and an integrated thermostatic control based on either radiant panel or inertia technology.
- Products that improve electrical efficiency (corresponding **'Exceed'**):
 - Photo sensors:
 - Light fittings with photo sensors.



- Multi socket extension cables that have individually switched sockets.
 - Remote controlled sockets or switches.
- Components required as part of smart home systems that help with energy efficiency.

Exceed

- Efficient, good quality energy using products meeting higher standards (corresponding **‘Expect’**), including:
- LED lighting that meets ERP (a higher efficiency standard):
 - ERP is a regulatory requirement for almost all white lights. It requires a higher level of quality and efficiency. ERP does not apply to coloured lights – and there have been LED lights developed with enough colour to bypass the ERP requirement.
 - Rechargeable LED portable devices, including torches.
 - Kitchen appliances:
 - Please note that these criteria will change in 2021 when the EU Energy Label will be updated for a number of appliance types.
 - Cookers:
 - A+ rated or better for current energy label.
 - For double ovens, the rating for the larger, main oven is the pertinent rating.
 - For cookers that include a hob, the hob should be induction in order to meet the **‘Exceed’** requirement.
 - Cooker hoods:
 - A+ rated or better for current energy label.
 - Tumble dryers:
 - A++ or better rated for current energy label.

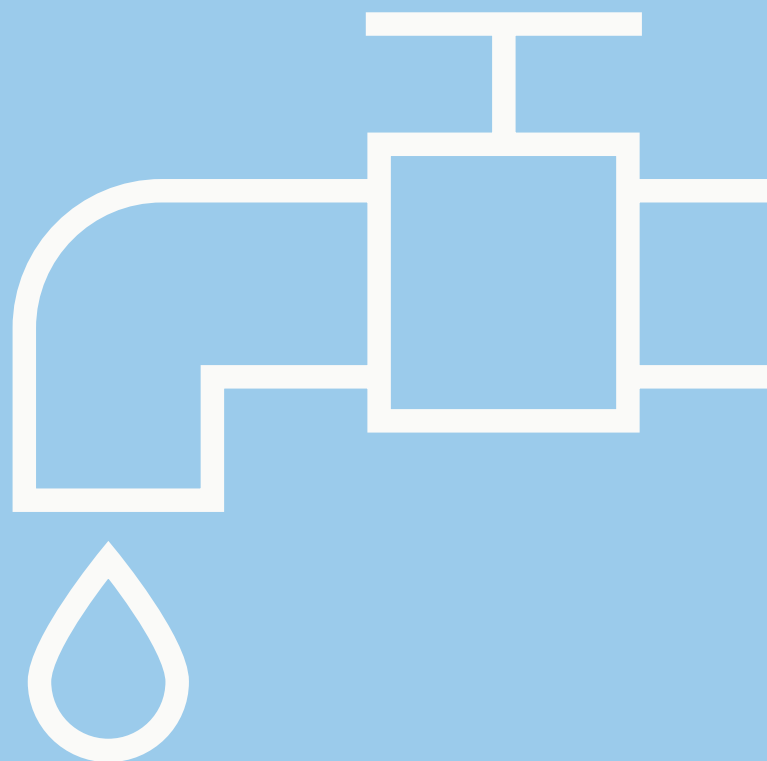
- Fridges, freezers and fridge freezers, wine coolers:
 - A+++ rated for current energy label.
- Washing machines and washer dryers
 - A+++ rated for current energy label.
- Dishwashers:
 - A+++ rated for current energy label.
- Induction hobs
- Air cooling:
 - Air conditioning units:
 - Single and double duct systems that achieve A+++ energy rating.
 - Other systems that achieve A energy rating.
 - Ceiling fans as a less energy intensive alternative to air conditioning.
 - Comfort fans where the Service Value is greater than or equal to 1.5 m³/min/W.
- Water heaters:
 - A rated for current energy label.
- Thermal efficiency (corresponding **‘Expect’**)
 - Doors and windows meeting **‘Exceed’** thermal requirements:
 - Windows, roof windows, glazed doors, patio doors: $U_w < 1.2 \text{ W/m}^2\text{K}$.
 - Doors (unglazed): $U_w < 1.2 \text{ W/m}^2\text{K}$.
 - Secondary retrofit glazing solutions
 - Draught protection including:
 - Draught excluders
 - Thermal linings for curtains
 - Door curtains
 - Letterbox draught excluders
 - Chimney draught excluding devices
 - Insulating foam.
 - Thermal insulation
 - Installed insulation and draught proofing.
- Non-powered alternatives to energy using products including:
 - Clothes lines including pegs, ground spikes

- and other accessories.
- Push mowers
- Wind-up gadgets
- Sun tunnels and sun pipes – making more use of daylight means less need for artificial (powered) light.
- Using renewables:
 - Solar indoor lighting
 - Solar security lights
 - Solar pond pumps
 - Solar PV panels
 - Solar thermal panels, solar thermal collectors
 - Biomass boilers.
- Products that improve hot water efficiency including:
 - Hot water insulation including cylinder jackets, pipe wrap and cylinders supplied with insulation.
 - Cylinder thermostats.
- Products that improve heating efficiency (corresponding **‘Expect’**) including:
 - Stove fans, making stoves more efficient
 - Radiator foils
 - Radiator keys, making radiators more efficient. Self-regulating valves that keep radiators free from air gaps.
 - Non-chemical devices that can help to prevent scale from building up in central heating systems.
 - Heat recovery devices and heat pumps (e.g. air source and ground source).
 - ‘Wet’ type underfloor heating
 - Thermometers (because using a thermometer can help to influence behaviour change).
 - Passive flue gas heat recovery systems.
 - Central heating filters

- Central heating pumps: A rated (separate/non-integrated pumps that circulate liquid in a closed circuit, e.g. to circulate for central heating or hot water).
- Tools that help to detect energy loss; e.g. heat cameras and infra-red thermometers.
- Products that enable energy control including:
 - Central heating controls:
 - Room thermostats
 - Thermostatic radiator valves
 - Programmers and timers.
 - Timers:
 - Timer switches to use with electrical gadgets
 - Timers for immersion heaters
 - Countdown timer switches.
 - Gadgets that enable switching off standby
 - Fridge thermometers
 - Motion and occupancy sensors:
 - Light fittings supplied with motion sensors
 - Motion sensors sold as stand-alone units.

Excite

- Renewable energy whole home solutions.



5. Save water

Watch list

- Water intensive products, including:
 - Lawn sprinklers
 - Swimming pools, paddling pools, spas
 - Baths with a capacity greater than 200 litres.
 - Calculated to the base of the overflow outlet.
- Inefficient water using products, including:
 - Showers with a flow rate greater than 11 litres per minute at 3 bar.
 - Basin taps and kitchen taps with a flow greater than 8 litres per minute at 3 bar.
 - Toilets with an average flush volume greater than 4.5 litres.
 - Average flush volume is calculated based on 3 short flushes to 1 full flush.

Expect

- Water using efficient products (corresponding **‘Exceed’**) including:
 - Showers with a flow of 9 litres or less at 3 bar.
 - Taps with flow of 8 litres per minute or less at 3 bar.
 - Toilets with an average flush volume of 4.5 litres or less.
 - Average is calculated from assuming 3 short flushes to 1 full flush.
 - Baths with a capacity of 170 litres or less
 - Calculated to the base of the overflow outlet.

- Products that enable more efficient garden watering, including:
 - Trigger fittings for hoses
 - Micro drip irrigation
 - Underground irrigation systems
 - Water timers
 - Lawnmowers with a mulching function (helping to keep moisture in the soil for longer).

- Products that enable more efficient water use in the home including:
 - Washing up bowls
 - Tap aerators
 - Gadgets that enable more efficient water use in a bath e.g. bath dams.
 - Please note that replacement valves and cistern fittings for toilets are listed in **Live smarter** as enabling repair.

- Rainwater collection and use (corresponding **‘Exceed’**) including:
 - Pressure washers (electric only) supplied with a suction hose that enables use of stored water (e.g. rainwater in a water butt).
 - Water butt pumps.

Exceed

- Water using efficient products (corresponding **‘Expect’**) including:
 - Showers with flow of 8 litres per minute or less at 3 bar.
 - Taps with flow of 6 litres per minute or less at 3 bar.

- Toilets with an average flush volume of 3.5 litres or less.
 - Average is calculated from assuming 3 short flushes to 1 full flush.
- Baths with a capacity of 155 litres or less
 - Calculated to the base of the overflow outlet.
- Products that reduce the need to water gardens, including:
 - Mulch, including chipped bark.
 - Drought tolerant plants (see Plant List).
 - Rain sensors for watering systems.

Mulching over a flower bed or vegetable patch helps to keep water in the soil for longer.

- Rainwater collection and use (corresponding **'Expect'**) including
 - Water butts
 - Watering cans
 - Irrigation systems that can utilise stored water.
- Grey water collection and use.

Excite

- Alternatives to water using products
 - e.g. composting toilets.
- Innovative whole home rainwater or grey water solutions.



6. Sustainable materials

Watch list

- Materials linked to environmental and/or ethical issues that do not have provenance demonstrating responsible sourcing. These include:
 - Wood, paper, cardboard, charcoal
 - Stone if sourced from specified areas
 - Palm oil
 - Plant oil.
- Materials linked to environmental issues where responsible sourcing is not an option:
 - Peat
 - Seagrass
 - Ordinary Portland cement.
- Materials where processing is considered to be damaging.

Expect

- Any product, not listed on any principle's **'Watch list'**, sourced from factories with exemplary standards.
 - Suppliers who have joined a specified low carbon programme and who have a validated SMETA score of 4 or better. Schemes are:
 - Low Carbon Management Programme (World Wildlife Fund Hong Kong)
 - Low Carbon Management Programme Momentum (World Wildlife Fund Hong Kong)
 - Green Supply Chain Improvement (Environmental Defence Fund).

- Suppliers who are participating in Kingfisher's Ceramics Community Initiative.
- Suppliers assessed on a case-by-case basis.
- Any product, not listed on a principle's **'Watch list'**, that has one of the following certifications:
 - BES6001 at 'Good', 'Very Good' or 'Excellent' level;
 - BES6001 is a framework for the Responsible Sourcing of Construction Products.
 - Developed by the Building Research Establishment (BRE)
 - Better Cotton Initiative
 - TFT Responsible Stone
 - Forest Stewardship Council (FSC)
 - Programme for the Endorsement of Forest Certification (PEFC)
 - Cradle to Cradle:
 - Cradle to Cradle certified at 'Bronze' or better.
 - Material Health certified at 'Bronze' or better.
 - Cradle to Cradle Products Innovation Institute is an international organisation, linked to the circular economy.
- Responsibly sourced products, addressing specified materials that are of concern, including:
 - Wood, paper and card that meets Kingfisher's Wood and Paper policy.
 - Cotton:
 - Responsible sourcing schemes include the Better Cotton Initiative.



- Stone:
 - Responsible sourcing schemes include where the quarry is joined to The Forest Trust's Responsible Stone Programme.
 - Plant oils:
 - Endorsed under one of the EU Renewable Energy Directive (RED) approved certification schemes (i.e. EU Directives 2009/28/EC and 2009/30/EC – these outline voluntary schemes as a compliance mechanism for sustainably sourced bio-fuels and bio-based products).
 - Palm oil:
 - Endorsed under one of the EU Renewable Energy Directive (RED) approved certification schemes (i.e. EU Directives 2009/28/EC and 2009/30/EC – these outline voluntary schemes as a compliance mechanism for sustainably sourced bio-fuels and bio-based products).
 - Agricultural products (including Christmas trees):
 - Sourced from suppliers that are part of the Global GAP scheme.
 - Aluminium:
 - Aluminium comes from an Aluminium Stewardship Initiative (ASI) certified smelter which requires Greenhouse Gas (GHG) emission intensity, tonnes CO₂ per tonne of aluminium to be ≤8 tCO₂e/t Al for new operations from 2020 and existing operations by 2030.
 - Cement meeting CEMIII standard which has 55% cement replacement.
 - Specified natural materials. Please note that some of these may meet **'Exceed'** criteria if sourced to a higher standard (corresponding **'Exceed'**):
 - Mango wood
 - Rubber wood
 - Olive wood
 - Willow
 - Bamboo
 - Heather (Brushwood)
 - Rattan
 - Hemp
 - Linen
 - Ramie
 - Reed
 - Sisal.
 - Compostable bioplastic e.g. polylactic acid (PLA):
 - Material must carry EN 13432 or EN 14995 certification or have been independently tested to confirm that the material will compost in a household/garden environment.
 - Raw material must be responsibly sourced using a 3rd party certification.
 - Products where distribution impact has been addressed. This needs to be assessed on a case-by-case basis and includes:
 - Concentrates, powders, light-weighting.
- ## Exceed
- Any product, not listed on any principle's **'Watch list'**, that has one of the following certifications:
 - Cradle to Cradle
 - Cradle to Cradle certified at 'Silver' or better
 - Material Health certified at 'Silver' or better
 - Cradle to Cradle Products Innovation Institute is an international organisation, linked to the circular economy.
 - Responsibly sourced products, using a relevant scheme (corresponding **'Expect'**), including:
 - Willow
 - Mango wood
 - Rubber wood
 - Bamboo
 - Sisal
 - Aluminium
 - Aluminium comes from an Aluminium Stewardship Initiative (ASI) certified smelter and Greenhouse Gas (GHG) emission intensity, tonnes CO₂ per tonne of aluminium GHG intensity of final cast aluminium ≤4.5 tCO₂e/t Al.
 - Specified materials:
 - Banana fibre
 - Coir, by-product of coconut processing.
 - Cork, supporting cork oak forests.
 - Jute and hessian
 - Lyocell
 - Rice husks
 - Raffia (Raphia) (must not be synthetically dyed)
 - Straw, strawboard
 - Water hyacinth.
 - Chrome III plated products.
- ## Excite
- Innovative alternatives to damaging products, e.g.
 - Hempcrete as an alternative to cement-based products
 - Products re-engineered to be PVC free.

Appendix

27 **Plant list**

33 **Useful contacts**



Plant list

Exceed plant list

Please note that all viable plants qualify as ‘**Expect**’ in the principle **Connect to nature**, providing that any growing media they are sold with is peat free and that they are not a non-native invasive plant.

This applies to seeds, bulbs, turf, lawn seed, bedding plants, nursery stock, trees and shrubs. It also applies to rooted Christmas trees that are sold in a pot.

Plant type	Species/variety details	Details	Principle	Reference
Culinary herbs	All	Grow Your Own	Connect to nature	
Vegetables	All	Grow Your Own	Connect to nature	
Fruit	All	Grow Your Own	Connect to nature	
Flower	Allium, all	Supports pollinating insects	Connect to nature	RHS Perfect for Pollinators
Flower	Alyssum	Supports pollinating insects	Connect to nature	RSPB: Best Flowering Plants for Gardens, RHS Perfect for Pollinators
Flower	Aquilegia, all	Supports pollinating insects	Connect to nature	RHS Perfect for Pollinators
Flower	Aubrieta, Aubretia	Supports pollinating insects	Connect to nature	RHS Perfect for Pollinators
Flower	Bell flower, Campanula	Supports pollinating insects	Connect to nature	RHS Perfect for Pollinators
Shrub	Berberis	Berries support birds and the thorns ensure a good nesting spot	Connect to nature	RSPB: Best Garden Shrubs
Tree	Birch, all	Supports many species of insect	Connect to nature	RSPB: Best Trees for the Garden
Shrub	Box, Buxus sempervirens	Supports pollinating insects	Connect to nature	RHS Perfect for Pollinators
Shrub	Buddleia, Buddleja davidii, Buddleja globosa	Supports pollinating insects	Connect to nature	RHS Perfect for Pollinators
Flower	Cabbage palm, Cordyline	Able to thrive with less watering than many plants	Save water	RHS Drought-resistant plants
Shrub	California lilac, Ceanothus species	Supports pollinating insects	Connect to nature	RHS Perfect for Pollinators
Flower	Candytuft, Iberis saxatilis, Iberis sempervirens	Supports pollinating insects	Connect to nature	RSPB: Best Flowering Plants for Gardens, RHS Perfect for Pollinators

Plant type	Species/variety details	Details	Principle	Reference
Flower	Catmint, Nepeta species	Supports pollinating insects	Connect to nature	RSPB: Best Flowering Plants for Gardens, RHS Perfect for Pollinators
Flower	Coneflower, Rudbeckia all	Supports pollinating insects	Connect to nature	RHS Perfect for Pollinators
Flower	Cornelian cherry – Cornus mas	Fruits support birds	Connect to nature	RSPB: Best Garden Shrubs
Flower	Cornflower	Supports pollinating insects	Connect to nature	RSPB: Best Flowering Plants for Gardens
Flower	Cosmos , Cosmos bipinnatus, Cosmos sulphureus	Supports pollinating insects	Connect to nature	RHS Perfect for Pollinators
Flower	Cowslip	Native wildflower	Connect to nature	RHS Perfect for Pollinators
Tree	Crab apple, all	Supports pollinating insects and fruits support birds	Connect to nature	RSPB: Best Trees for the Garden, RHS Perfect for Pollinators
Flower	Crocus, all	Supports pollinating insects	Connect to nature	RHS Perfect for Pollinators
Flower	Dahlias, all	Supports pollinating insects	Connect to nature	RSPB: Best Flowering Plants for Gardens
Tree	Dogwood – Cornus sanguinea	Berries support birds	Connect to nature	RSPB: Best Garden Shrubs
Flower	Echinacea , Echinacea purpurea	Supports pollinating insects	Connect to nature	RHS Perfect for Pollinators
Flower	Elephants ear , Bergenia species	Supports pollinating insects	Connect to nature	RHS Perfect for Pollinators
Flower	Euphorbia , Euphorbia amygdaloides, Euphorbia characias, Euphorbia cyparissias, Euphorbia epithymoides, Euphorbia × martini, Euphorbia nicaeensis	Supports pollinating insects	Connect to nature	RHS Perfect for Pollinators
Flower	Evening primrose , Oenothera species	Supports pollinating insects	Connect to nature	RSPB: Best Flowering Plants for Gardens
Shrub	Firethorn , Pyracantha	Supports pollinating insects	Connect to nature	RHS Perfect for Pollinators
Flower	Foxglove , Digitalis species	Supports pollinating insects	Connect to nature	RSPB: Best Flowering Plants for Gardens
Flower	French marigold , Calendula officinali, Tagetes patula	Supports pollinating insects	Connect to nature	RSPB: Best Flowering Plants for Gardens
Flower	Geranium , Pelargonium	Able to thrive with less watering than many plants	Save water	RHS Drought-resistant plants
Flower	Geum, all	Supports pollinating insects	Connect to nature	RHS Perfect for Pollinators
Flower	Grape hyacinth, all	Supports pollinating insects	Connect to nature	RHS Perfect for Pollinators
Flower	Guelder rose – Viburnum opulus	Berries support birds	Connect to nature	RSPB: Best Garden Shrubs
Flower	Gypsophila , Gypsophila elegans	Supports pollinating insects	Connect to nature	RHS Perfect for Pollinators
Flower	Hardy geraniums (cranesbill), all	Supports pollinating insects	Connect to nature	RHS Perfect for Pollinators
Flower	Hawthorn – Crataegus monogyna	Supports many species of insect, berries are food for many bird species	Connect to nature	RSPB: Best Garden Shrubs

Plant type	Species/variety details	Details	Principle	Reference
Shrub	Heather, all	Supports pollinating insects	Connect to nature	RHS Perfect for Pollinators
Flower	Hebe, all	Supports pollinating insects	Connect to nature	RHS Perfect for Pollinators
Flower	Helenium	Supports pollinating insects	Connect to nature	RHS Perfect for Pollinators
Flower	Hellebore, all	Supports pollinating insects	Connect to nature	RHS Perfect for Pollinators
Shrub	Holly, all	Supports many species of insect	Connect to nature	RSPB: Best Trees for the Garden, RHS Perfect for Pollinators
Flower	Hollyhock , <i>Alcea rosea</i>	Supports pollinating insects	Connect to nature	RHS Perfect for Pollinators
Flower	Honesty , <i>Lunaria annua</i>	Supports pollinating insects	Connect to nature	RSPB: Best Flowering Plants for Gardens, RHS Perfect for Pollinators
Flower	Honeysuckle , <i>Lonicera periclymenum</i> , <i>Lonicera × purpusii</i>	Native wildflower	Connect to nature	RHS Perfect for Pollinators
Flower	Ivy , <i>Hedera helix</i>	Supports pollinating insects	Connect to nature	RHS Perfect for Pollinators
Flower	Japanese anemone , <i>Anemone × hybrida</i>	Supports pollinating insects	Connect to nature	RHS Perfect for Pollinators
Shrub	Japanese quince , <i>Chaenomeles species</i>	Supports pollinating insects	Connect to nature	RHS Perfect for Pollinators
Flower	Knapweed , <i>Centaurea spp</i>	Supports pollinating insects	Connect to nature	RSPB: Best Flowering Plants for Gardens
Flower	Larkspur , <i>Delphinium elatum</i>	Supports pollinating insects	Connect to nature	RSPB: Best Flowering Plants for Gardens
Flower	Lavender, all including French, English and Dentata	Supports pollinating insects	Connect to nature	RHS Perfect for Pollinators
Flower	Love-in-a-Mist , <i>Nigella</i>	Supports pollinating insects	Connect to nature	RHS Perfect for Pollinators
Flower	Michaelmas daisy , <i>Aster novi-belgii</i>	Supports pollinating insects, linnets and finches for seeds	Connect to nature	RSPB: Best Flowering Plants for Gardens
Flower	Nasturtium , <i>Tropaeolum majus</i>	Supports pollinating insects	Connect to nature	RSPB: Best Flowering Plants for Gardens
Flower	Nicotiana , <i>Nicotiana sylvestris</i> , <i>Nicotiana alata</i>	Supports pollinating insects	Connect to nature	RSPB: Best Flowering Plants for Gardens
Shrub	Oregon grape , <i>Mahonia</i>	Supports pollinating insects	Connect to nature	RHS Perfect for Pollinators
Flower	Ox-eye daisy , <i>Leucanthemum vulgare</i>	Native wildflower	Connect to nature	RHS Perfect for Pollinators
Flower	Phlox , <i>Phlox paniculata</i>	Supports pollinating insects	Connect to nature	RHS Perfect for Pollinators
Shrub	Pieris , <i>Pieris formosa</i> , <i>Pieris japonica</i>	Supports pollinating insects	Connect to nature	RHS Perfect for Pollinators
Flower	Pinks , <i>Dianthus</i>	Supports pollinating insects	Connect to nature	RSPB: Best Flowering Plants for Gardens
Flower	Poached egg flower , <i>Limnanthes douglasi</i>	Supports pollinating insects	Connect to nature	RHS Perfect for Pollinators
Flower	Poppy , <i>Papaver rhoeas</i> , <i>Papaver orientale</i>	Supports pollinating insects	Connect to nature	RSPB: Best Flowering Plants for Gardens

Plant type	Species/variety details	Details	Principle	Reference
Flower	Primrose , <i>Primula vulgaris</i>	Native wildflower	Connect to nature	RHS Perfect for Pollinators
Shrub	Privet , <i>Ligustrum ovalifolium</i>	Supports pollinating insects	Connect to nature	RHS Perfect for Pollinators
Shrub	Rock rose , <i>Cistus</i>	Able to thrive with less watering than many plants	Save water	RHS Drought-resistant plants
Flower	Roses, all	Supports pollinating insects	Connect to nature	RSPB: Best Flowering Plants for Gardens
Tree	Rowan, all	Supports many species of insect, berries are food for blackbirds and starlings	Connect to nature	RSPB: Best Trees for the Garden, RHS Perfect for Pollinators
Flower	Salvia	Supports pollinating insects	Connect to nature	RHS Perfect for Pollinators
Flower	Scabious , <i>Knautia arvensis</i> , <i>Knautia macedonic</i> , <i>Scabiosa atropurpurea</i> , <i>Scabiosa caucasica</i> , <i>Scabiosa columbaria</i>	Supports pollinating insects	Connect to nature	RSPB: Best Flowering Plants for Gardens
Flower	Sedum	Able to thrive with less watering than many plants	Save water	RHS Drought-resistant plants
Flower	Shasta daisy , <i>Leucanthemum × superbum</i>	Supports pollinating insects	Connect to nature	RHS Perfect for Pollinators
Shrub	Skimmia , <i>Skimmia japonica</i>	Supports pollinating insects	Connect to nature	RHS Perfect for Pollinators
Flower	Snapdragon , <i>Antirrhinum majus</i>	Supports pollinating insects	Connect to nature	RHS Perfect for Pollinators
Flower	Snowdrop , <i>Galanthus nivalis</i>	Supports pollinating insects	Connect to nature	RHS Perfect for Pollinators
Flower	Sunflower , <i>Helianthus annuus</i>	Supports pollinating insects, finches for seeds	Connect to nature	RSPB: Best Flowering Plants for Gardens
Shrub	Sweet box , <i>Sarcococca confusa</i>	Supports pollinating insects	Connect to nature	RHS Perfect for Pollinators
Flower	Sweet William , <i>Dianthus barbatus</i>	Supports pollinating insects	Connect to nature	RSPB: Best Flowering Plants for Gardens
Flower	Teasel , <i>Dipsacus fullonum</i>	Supports pollinating insects, finches for seeds	Connect to nature	RSPB: Best Flowering Plants for Gardens
Flower	Thrift , <i>Armeria maritima</i>	Supports pollinating insects	Connect to nature	RHS Perfect for Pollinators
Flower	Tickseed , <i>Coreopsis verticillata</i>	Supports pollinating insects, finches for fruits	Connect to nature	RSPB: Best Flowering Plants for Gardens
Flower	Verbena , <i>Verbena bonariensis</i>	Supports pollinating insects	Connect to nature	RHS Perfect for Pollinators
Flower	Veronica , <i>Veronica longifolia</i> , <i>Veronica spicata</i>	Supports pollinating insects	Connect to nature	RHS Perfect for Pollinators
Flower	Wallflower , <i>Erysimum species</i>	Supports pollinating insects	Connect to nature	RHS Perfect for Pollinators
Shrub	Weigelia , <i>Weigela florida</i>	Supports pollinating insects	Connect to nature	RHS Perfect for Pollinators
Flower	Yarrow , <i>Achillea millefolium</i>	Supports pollinating insects, finches for seeds	Connect to nature	RSPB: Best Flowering Plants for Gardens

Watch list

Non-native invasive plants are not to be sold by Kingfisher group companies.

Non-native invasive plant list

Plant type	Species/variety details	Common name	Reference
Aquatic plant	<i>Lysichiton americanus</i>	American skunk cabbage	EU List of Invasive Alien Species of Union Concern
Plant	<i>Sasa palmata</i>	Broad leaved bamboo	Plantlife
Aquatic plant	<i>Myriophyllum heterophyllum</i>	Broadleaf watermilfoil	EU List of Invasive Alien Species of Union Concern
Plant	<i>Juncus planifolius</i>	Broad-leaved rush	European Communities (Birds and Natural Habitats) Regulations (S.I. No 477) Schedule 3: Part 1.
Aquatic plant	<i>Aponogeton distachyos</i>	Cape pondweed	Plantlife
Plant	<i>Gunnera tinctoria</i>	Chilean rhubarb	EU List of Invasive Alien Species of Union Concern
Shrub	<i>Cotoneaster bullatus</i> , <i>Cotoneaster horizontalis</i> , <i>Cotoneaster integrifolius</i> , <i>Cotoneaster microphyllus</i> , <i>Cotoneaster simonsii</i>	Cotoneaster – specified spp	Plantlife
Aquatic plant	<i>Lagarosiphon major</i>	Curly waterweed	EU List of Invasive Alien Species of Union Concern
Aquatic plant	<i>Sagittaria latifolia</i>	Duck-potato	Plantlife
Tree	<i>Robinia pseudoacacia</i>	False-acacia	Plantlife
Plant	<i>Parthenocissus inserta</i>	False virginia-creeper	Plantlife
Plant	<i>Allium paradoxum</i>	Few-flowered leek	Plantlife
Aquatic plant	<i>Cabomba caroliniana</i>	Fanwort	Plantlife
Aquatic plant	<i>Hydrocotyle ranunculoides</i>	Floating pennywort	EU List of Invasive Alien Species of Union Concern
Aquatic plant	<i>Ludwigia</i> spp	Floating primroses	EU List of Invasive Alien Species of Union Concern
Aquatic plant	<i>Nymphoides peltata</i>	Fringed water lily	Plantlife
Plant	<i>Heracleum mantegazzianum</i>	Giant hogweed	EU List of Invasive Alien Species of Union Concern
Plant	<i>Gunnera manicata</i> , <i>Gunnera tinctoria</i>	Giant rhubarb	Plantlife
Aquatic plant	<i>Salvinia molesta</i>	Giant salvinia	Plantlife
Aquatic plant	<i>Caulerpa racemosa</i>	Green algae – sea grapes	Plantlife
Aquatic plant	<i>Caulerpa taxifolia</i>	Green algae – sea grapes	Plantlife
Aquatic plant	<i>Codium fragile</i>	Green seafingers	Plantlife
Plant	<i>Impatiens glandulifera</i>	Himalayan balsam	EU List of Invasive Alien Species of Union Concern
Plant	<i>Persicaria wallichii</i>	Himalayan knotweed	European Communities (Birds and Natural Habitats) Regulations (S.I. No 477) Schedule 3: Part 1.
Plant	<i>Carpobrotus edulis</i>	Hottentot-fig	Plantlife

Plant type	Species/variety details	Common name	Reference
Plant	Fallopia japonica, Fallopia sachalinensis, Fallopia japonica x sachalinensis (F. x bohemica)	Japanese knotweed, giant knotweed, hybrid knotweed	Plantlife
Shrub	Rosa rugosa	Japanese rose	Plantlife
Aquatic plant	Egeria densa	Large-flowered waterweed	European Communities (Birds and Natural Habitats) Regulations (S.I. No 477) Schedule 3: Part 1.
Plant	Persicaria perfoliata	Mile-a-minute weed	European Communities (Birds and Natural Habitats) Regulations (S.I. No 477) Schedule 3: Part 1.
Aquatic plant	Crassula helmsii	New Zealand pigmyweed aka Australian stonecrop	Plantlife
Aquatic plant	Elodea nuttallii	Nuttall's waterweed	EU List of Invasive Alien Species of Union Concern
Aquatic plant	Myriophyllum aquaticum	Parrot's feather	EU List of Invasive Alien Species of Union Concern
Plant	Smyrniium perfoliatum	Perforated alexanders	Plantlife
Aquatic plant	Pontederia cordata	Pickeralweed	Plantlife
Plant	Acaena novae-zelandiae	Pirri-pirri bur	Plantlife
Aquatic plant	Elodea (inc canadensis, nuttallii, densa)	Pondweed	Plantlife
Plant	Disphyma crassifolium	Purple dewplant	Plantlife
Shrub	Rhododendron ponticum, Rhododendron luteum, Rhododendron ponticum x R. maximum	Rhododendron , yellow azalea , hybrid rhododendron	Plantlife
Shrub	Hippophae rhamnoides	Sea buckthorn	Plantlife
Shrub	Rubus spectabilis	Salmonberry	European Communities (Birds and Natural Habitats) Regulations (S.I. No 477) Schedule 3: Part 1.
Plant	Gaultheria shallon	Shallon	Plantlife
Plant	Hyacinthoides hispanica (Scilla campanulata), Hyacinthoides hispanica x H non-scripta	Spanish bluebell, hybrid bluebell	Plantlife
Plant	Allium triquetrum	Three-cornered leek	Plantlife
Tree	Ailanthus altissima	Tree of heaven	Plantlife
Plant	Lamiastrum galeobdolon subsp argentatum	Variiegated yellow archangel subspecies	Plantlife
Aquatic plant	Trapa natans	Water chestnut	European Communities (Birds and Natural Habitats) Regulations (S.I. No 477) Schedule 3: Part 1.
Aquatic plant	Azolla filiculoides	Water fern	EU List of Invasive Alien Species of Union Concern
Aquatic plant	Eichhornia crassipes	Water hyacinth	EU List of Invasive Alien Species of Union Concern
Aquatic plant	Pistia stratioides	Water lettuce	Plantlife



Kingfisher

Kingfisher plc.
3 Sheldon Square, Paddington, London W2 6PX
+44 (0)20 7372 8008
www.kingfisher.com



castorama



SCREWFIX

